

# USER MANUAL

## TABLE OF CONTENTS

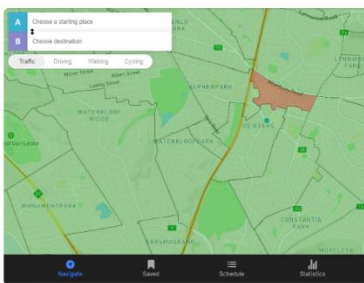
- Introduction.....2
- Navigation Subsystem .....2
  - 2.1 Selecting Destination Address/Location .....2
  - 2.2 Searching for Places .....3
  - 2.3 Canceling a Trip .....3
  - 2.4 Updating/Changing a Trip .....3
  - 2.5 Browsing the Map.....3
- Map Overlay .....4
- Stats Subsystem.....4
  - 4.1 Viewing Stats.....4
  - 4.2 Interacting with Stats .....4

## INTRODUCTION

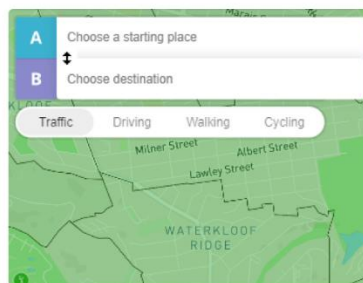
Welcome to the user manual for Where is the Power? This manual will guide you through the various features and functionalities of the application. The project aims to provide a seamless navigation experience and present statistical information related to your trips. This user manual will assist you in utilizing the project effectively.

## NAVIGATION SUBSYSTEM

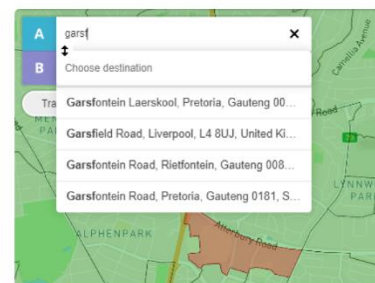
The navigation subsystem allows you to plan and manage your trips efficiently.



Home Screen (Navigate Tab)



Navigation bar



Suggestions from Search

### 2.1 Selecting Destination Address/Location

To select a destination address or location:

1. Open the application and ensure you are on the home screen.
2. Tap on the "Starting place" field.
3. Enter the address you will start your journey on.
4. Tap on the "Destination" field.
5. Enter the desired address or location using the on-screen keyboard.
6. As you type, the application will provide suggestions.
7. Select the appropriate destination from the suggestions.
8. Once the destination is selected, the application will display the route information.
9. A "Starting place" or "Destination" may also be selected on the map itself.

## 2.2 Searching for Places

To search for a specific place:

1. Open the application and ensure you are on the home screen.
2. Tap on the “Starting place” field or the “Destination” field on the Navigation bar.
3. Enter the name or type of the place you want to search.
4. The application will display a list of relevant places.

## 2.3 Canceling a Trip

To cancel a trip:

1. If you want to cancel the current trip, look for the "Cancel" icon.
2. Tap on the "Cancel" icon.
3. The system will clear the route from the map.

## 2.4 Updating/Changing a Trip

To update or change a trip:

1. Open the application and ensure you are on the home screen.
2. Tap on the “Starting place” field or the “Destination” field.
3. Enter the name or type of the place you want to update it to.
4. Modify the destination address or location using the on-screen keyboard.
5. Select the updated destination from the suggestions.
6. The application will recalculate the route and display the updated information.

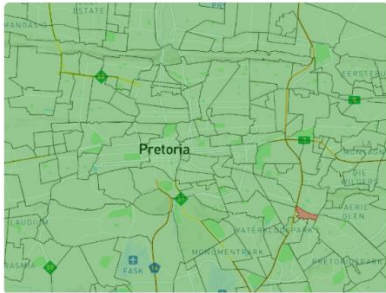
## 2.5 Browsing the Map

To browse the map:

1. Open the application and ensure you are on the home screen.
2. Use your fingers to navigate, pinch to zoom in/out, and swipe to move across the map.
3. Explore different areas by panning and zooming as desired.

## MAP OVERLAY

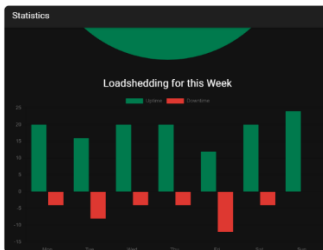
The map overlay feature provides additional layers of information on top of the map.



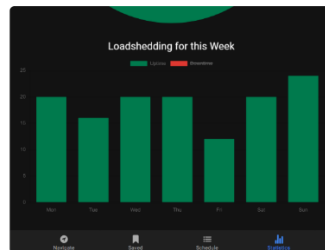
Suburb Borders

## STATS SUBSYSTEM

The stats subsystem allows you to view and interact with statistical information related to your trips.



Loadshedding Statistics Page



Filter Chart

### 4.1 Viewing Stats

To view the stats:

1. Open the application and ensure you are on the home screen.
2. Tap on the "Statistics" tab located at the bottom of the screen.
3. The application will display various statistics related to loadshedding such as the hours of loadshedding for today as well as the uptime/downtime throughout the week.

### 4.2 Interacting with Stats

To interact with the stats:

1. Open the application and ensure you are on the "Stats" screen.
2. Tap on a specific statistic to view more details or perform an action associated with that statistic.