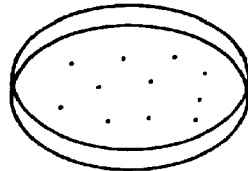


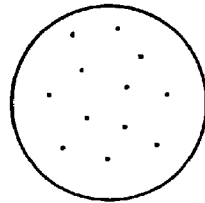
FIG. 64

TRANSFORM E coli WITH RECOMBINANT PLASMIDS

↓ (BLOT BACTERIA ON
NITROCELLULOSE FILTER)



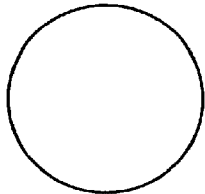
IPTG PLATE



LYSE WITH CHLOROFORM



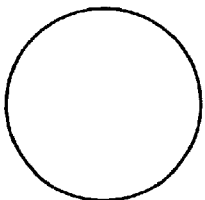
BSA ABSORPTION/DNAse/LYSOZYME



INCUBATE WITH PRIMARY
ANTIBODY



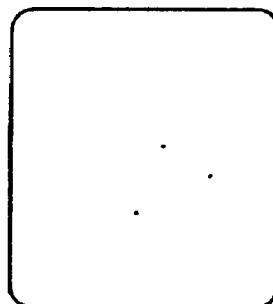
WASH



INCUBATE WITH
¹²⁵I SECONDARY ANTIBODY



WASH



AUTORADIOGRAPH