


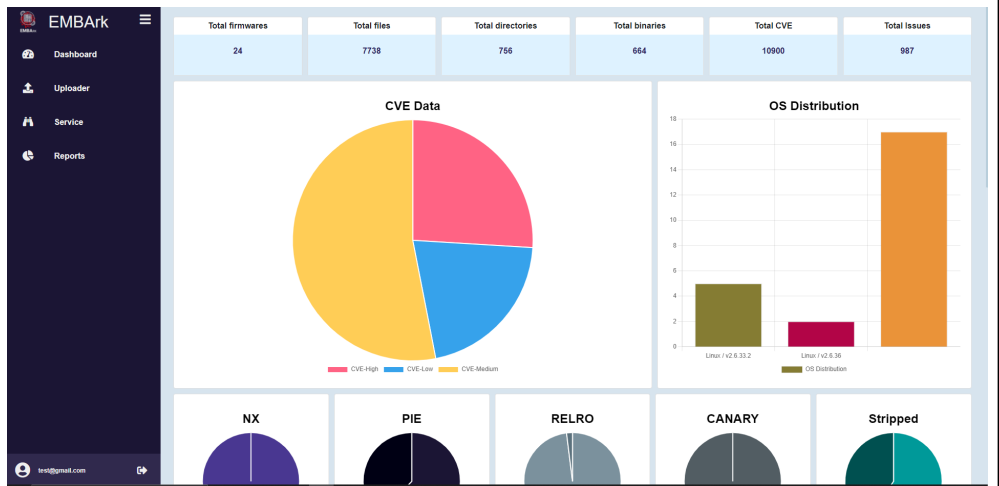
# AMOS SS21 Project #1 Siemens Energy EMBA Service

## Template

Please use the following template for creating your project report.

Project name	Siemens Energy EMBA Service (Embark)
Project mission	The use of EMBA service will enable the user with an interactive management console for maintaining reports generated for specific firmware images. Multi-user applicability is baked into the UI by containerizing the service backend thus allowing multiple users to simultaneously take advantage of the service thereby speeding up the overall process flow in the organization. Automatic management and retrieval of the generated reports from the service to have an in-depth overview of the project status.
Industry partner	Siemens Energy
Team logo	
Project summary	The long-term goal of EMBA Service is to provide an end-to-end web service that enables the user with all the functionalities provided by EMBA alongwith the ease of access on any web browser. The final result is an user-friendly web application that uplinks the firmware images and generates a service report. The web UI allows the user to view and analyze the generated reports which remain embedded for long-term availability. Also, the web UI is capable of handling simultaneous user access thus providing incredible capability. User access control is a critical feature that also prevents unwanted exploitation of the EMBA services.

## Project illustration



## Team photo



## Project repository

<https://github.com/amosproj/amos-ss2021-emba-service>

## Additional information

Any additional information you would like to provide (optional)